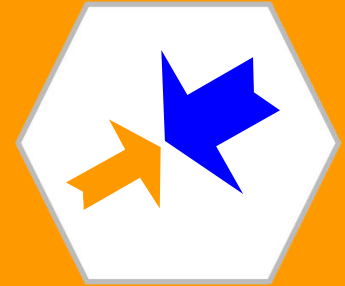


Manufacturer&Supplier of Professional Fiber Optic Cabling System

*Products & Services & After sales services*



# Wirenet Telecom Technology Co.,Ltd

深圳威尔特通信科技有限公司

2023 VERSION

Add: 2rd floor, 2 Building, Jingheyuan Industry Park, No.2004 Xuegang Road, Bantian Street,  
Longgang District, Shenzhen, China

Tel: 86-755-28461866 Fax: 86-755-28461781

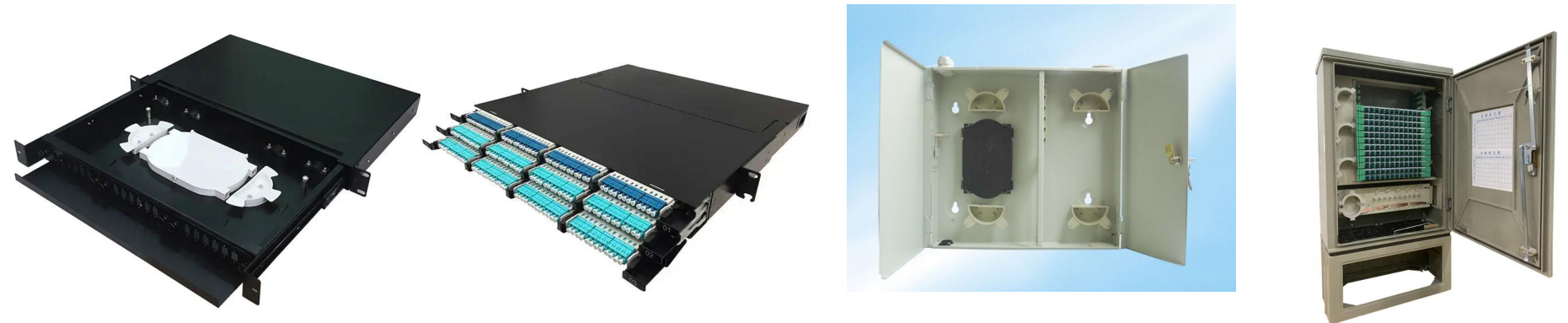
Website: <http://www.wirenetfiber.cn>

WIRENET TELECOM TECHNOLOGY CO., LTD



# Fiber Optic Patch Panel

WIRENET FIBER OPTIC PATCH PANEL SERIES



# Catolog

WIRENET

FIBER OPTIC PATCH PANEL SYSTEM

- MPO/MTP patching
- DIN Box
- Patch panel fixed design
- Patch panel drawe design
- Patch panel side sliding design
- Patch panel wall mounted design
- Optical Distribution Unit (ODF)
- Optic Distribution Cabinet
- Splicer tray& Accessories



### MPO/MTP patching

#### MPO/MTP Patch Panel

Telecommunication central office. MPO patch panel supports maximum 4xMPO cassettes in 1U, 8 x cassettes in 2U and 16 cassettes in 4U. Each MPO cassette is available in 12 or 24xLC connectors, which provides max. 96 ports in 1U, 192 ports in 2U and 288 ports in 4U(LC).



#### MPO/MTP Cassette Module

The MPO/MTP Cassette modules provide the interface between the MPO/MTP on the trunk and the LC duplex and jumpers and that will then connect directly into the electronics.





## DIN Box

### DIN Box

#### Feature

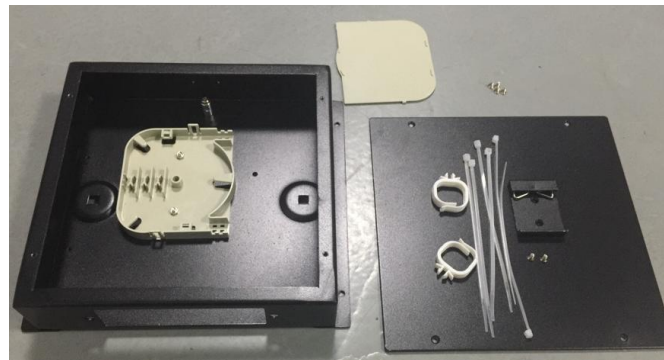
- Suitable for different adapters: SC Duplex, LC Quad
- 2pcs cable entry/exit ports; 12pcs pigtail entry/exit ports
- Splicing module of 12 fibers inside
- Max. 6 pcs adapters can be loaded

#### Specification

Dimension	Length	165mm
	Width	155mm
	Height (without adapter)	45mm
Material	PC+ABS	
Color	White	
Front	6*SC duplex adapter	
Front panel	6*LC quad adapter	



WTMD-DIN-A-12~24



WTMD-DIN-C-12~24



WTMD-DIN-B-12~24



# Fiber Optic Patch Panel&ODF&Cabinet

## Patch Panel overview

### Patch Panel

#### Description

Slidable Rack-mount Fiber Optic Distribution Frame has aluminum sliding fittings with self-locking functions prevent the drawer from falling when moved; 19-inch rack mount for ST, SC, E2000, LC, MTRJ, FC adapters. The drawer is the holding board for splicing, easy to withdraw the fibers when testing and distributing.

#### Application

- Standard size, light weight and reasonable structure
- Slide out drawer for easy cable management
- Suitable for ribbon and single fiber
- Compact design for space saving
- Various panel plate to fit different adapter interface
- Front mark on the plate is easy for identification and operatio
- Easy for management and operation

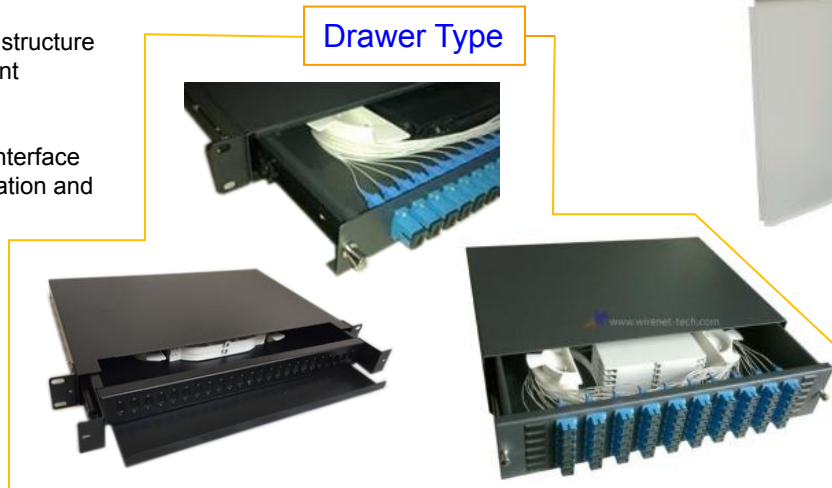
#### Feature

- Telecommunications subscriber loop
- Fiber to the home (FTTH)
- LAN/WAN
- CATV

#### Side sliding Type



#### Drawer Type



#### Wall mounted Type



#### Fixed Type



#### Rackmounted Type





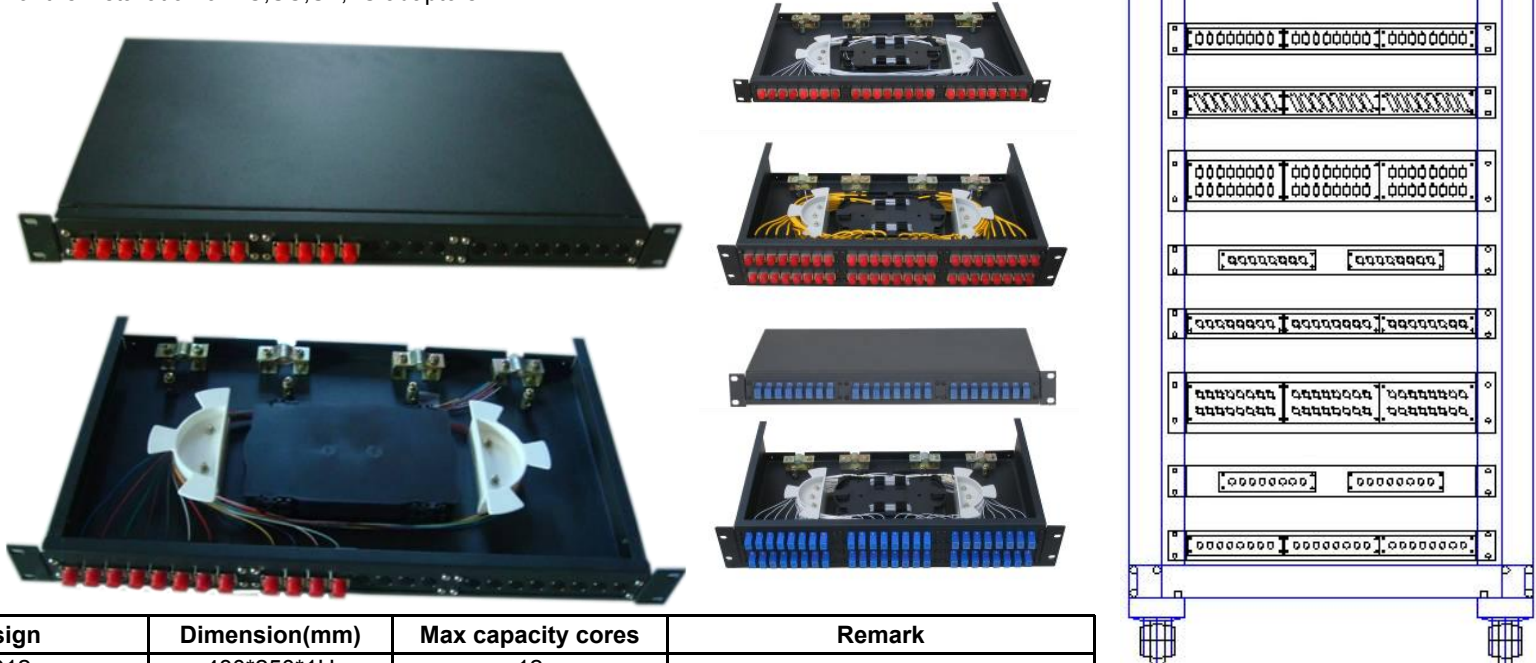
## Fiber Optic Patch Panel&ODF&Cabinet

### Patch Panel fixed design

#### Patch Panel fixed design

##### Feature

- Applicable in the branch connection of fiber termination, working as distribution box
- 19" standard structure, rack mounted
- available for the installation of FC, SC, ST, LC adaptors



Design	Dimension(mm)	Max capacity cores	Remark
SC12	480*250*1U	12	The body is made of cold rolled steel sheet, with electrostatic spraying. We can install adaptors for you, available for FC, ST, SC, LC .
SC24	480*250*1U	24	
SC48	480*250*2U	48	
FC12	480*250*1U	12	
FC24	480*250*1U	24	
FC48	480*250*2U	48	
ST12	480*250*1U	24	
ST24	480*250*1U	24	

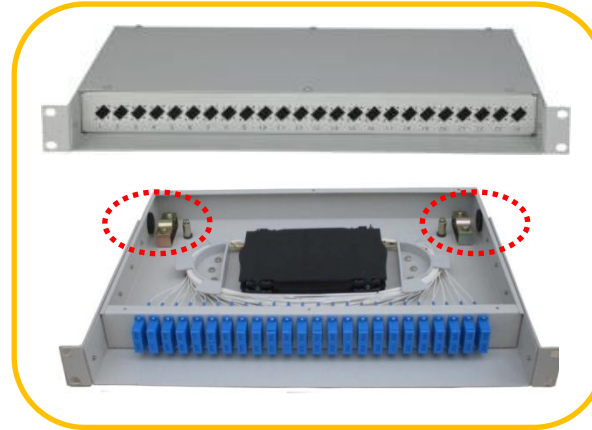




## Patch Panel fixed design

### Introduction

- Dustproof design,suitable for rack dustproof installlition
- Compatible for most adaptors
- Easy to operate for revolving structure,rack mount
- cold rolled steel sheet
- It can be widely applied for distribution and end connection of indoor cables



### Description

- Dummy drawer optical fiber terminal box
- Applied in the branch connection of optical fiber termination
- 19" standard structure,rack mounted
- Available for the adaptors installation of FC,SC,ST,LC
- Artistic appearance,easy for pasting signs.





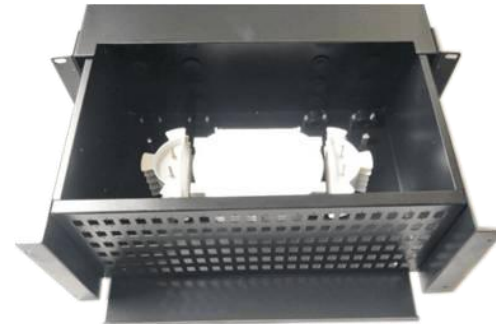
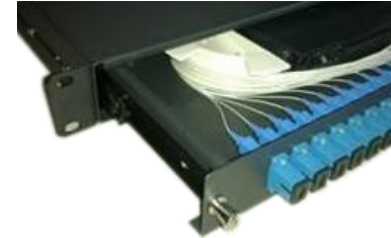


## Fiber Optic Patch Panel&ODF&Cabinet

### Patch Panel drawer design

#### Patch Panel drawer design

- Applicable in the termination and
- 19" standard structure, sliding design, rack mounted
- Suitable for FC,SC,ST,LC adapters



Model No.	Dimension(mm)	Max capacity(cores)	Remark
GPZ/JJ-CL-SC12	430*300*1U	12	Cold rolled steel sheet,with electrostatic spraying,suitable for FC,SC,ST,LC adapters.
GPZ/JJ-CL-FC24		24	
GPZ/JJ-CL-2SC24		48	
GPZ/JJ-CL-FC48	430*300*2U	48	



## Fiber Optic Patch Panel&ODF&Cabinet

Patch Panel side sliding design 1U 24core

### Patch Panel side sliding design 1U 24Core

#### Introduction

- Dustproof design,suitable for rack dustproof installtion
- Compatible for most adaptors
- Easy to operate for revolving structure,rack mount
- cold rolled steel sheet
- It can be widely applied for distribution and end connection of indoor cables



#### Description

- Dummy drawer optical fiber terminal box
- Applied in the branch connection of optical fiber termination
- 19" standard structure,rack mounted
- Available for the adaptors installation of FC,SC,ST,LC
- Artistic appearance,easy for pasting signs.





### Patch Panel side sliding design 2U 48Core

#### Introduction

- Dustproof design,suitable for rack dustproof installalition
- Compatible for most adaptors
- Easy to operate for revolving structure,rack mount
- cold rolled steel sheet
- It can be widely applied for distribution and end connection of indoor cables

#### Feature

- Standard size, can be rackmount and wallmount
- Splice tray inside changeable
- Can be used in 19", 23" standard distribution frame
- Suitable for ribbon and single fiber
- Various panel plate to fit different adapter interface
- Front mark on the plate is easy for identification and operation
- 12C, 24C, 48C(LC), 96C(LC), optional, with or without fiber optic pigtaills and adapters

2U 19" 48core



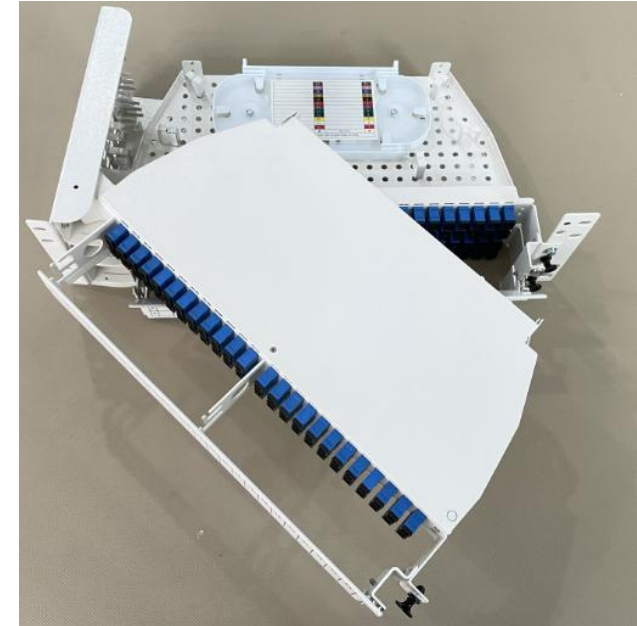
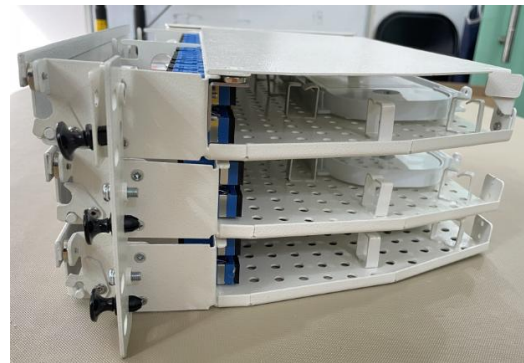


## Patch Panel side sliding design for 3U 144core

### Patch Panel side sliding design 3U 96Core

#### Feature

- 3U 19" 144core
- Two styles of left/right rotation
- Equipped with cable arrangement on the front
- High density
- Can be retrofitted with PLC installation device
- Can be used in 19"standard distribution frame
- Front mark on the plate is easy for identification and operation





## Patch Panel side wall mounted indoor design

## Patch Panel wall mounted indoor design

### Description

Indoor Wall-mount Fiber Optic Distribution Frame is mainly used for connecting the outdoor optical cables, optical patch cords and optical pigtails. It can be wall mounted or pole mounted, and facilitates the test and refit of the lines.



WTODF-INWL-A-12~144



WTODF-INWL-B-12~144

### Feature

- With steel plates can manage both single fiber and ribbon & bundle fiber cables
- FC, LC, SC, ST output interfaces optional
- Large working space to integrate the pigtail, cables and adapters
- Made of cold-rolling steel, static spreading-plastic, small dimension and exquisite, easy for operation
- Special design ensures the excess fiber cords and pigtails in good order

### Component

- Fiber Optic Splice Tray: storing fiber connectors (together with the protective components) and the spare fibers
- Fixing Device: used for fixing the fiber protective tubes, the fiber reinforced cores and the distribution pigtails
- The brim of the box is sealed



WTODF-INWL-C-12~144 with moq





## Fiber Optic Patch Panel&ODF&Cabinet

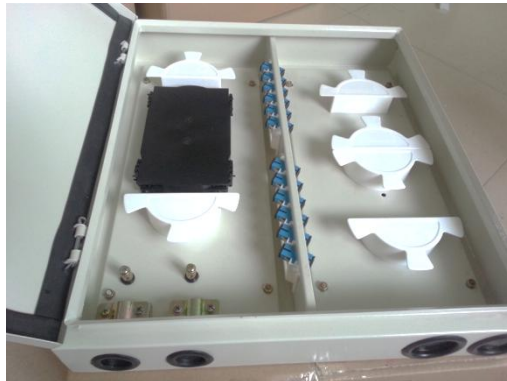
### Patch Panel side wall mounted outdoor design

#### Description

Outdoor Wall-mount Fiber Optic Distribution Frame is mainly used for connecting the outdoor optical cables, optical patch cords and optical pigtails. It can be wall mounted or pole mounted, and facilitates the test and refit of the lines.

#### Component

- Fiber Optic Splice Tray: storing fiber connectors (together with the protective components) and the spare fibers
- Fixing Device: used for fixing the fiber protective tubes, the fiber reinforced cores and the distribution pigtails
- The brim of the box is sealed



#### Feature

- Outdoor usage with sealing rubber
- With steel plates can manage both single fiber and ribbon & bundle fiber cables
- FC, LC, SC, ST output interfaces optional
- Large working space to integrate the pigtail, cables and adapters
- Made of cold-rolling steel, static spreading-plastic, small dimension and exquisite, easy for operation
- Special design ensures the excess fiber cords and pigtails in good order





### Optical Distribution Unit

#### Destription

- Rack-mount Fiber Optic Distribution Frame is modulized design with drawable trays inside and cold-rolled steel box. It could be pre-installed with various kinds of fiber optic adapters and pigtails
- It is with standard 19 inch size and properly designed to control the bend radius of the cable inside the enclosure to avoid extra optical loss. This frame is ideal for indoor fiber optic cables connection storage, distribution and management.

#### Features

- Standard size, light weight and reasonable structure
- Splice tray inside changeable
- Can be used in 19", 23" standard distribution frame
- Suitable for ribbon and single fiber
- Various panel plate to fit different adapter interface
- Front mark on the plate is easy for identification and operation
- 24C, 36C, 48C, 72C optional, with or without fiber optic pigtails and adapters
- Easy for management and operation

#### Application

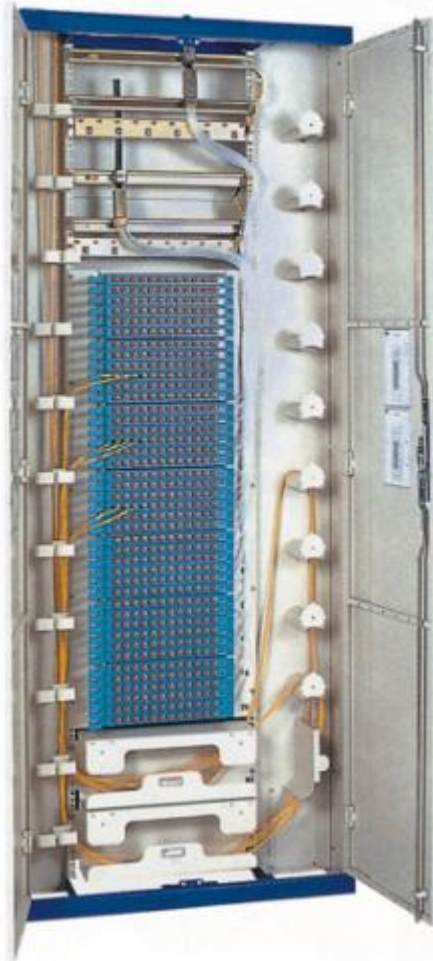
- Telecommunications subscriber loop
- Fiber to the home (FTTH)
- LAN/WAN
- CATV







### Optic Distribution Cabinet



### Introduction

ODF1900 series fiber optic cabinet is made of high intensity and anti-erosion imported cabinet body  
It is able to stand abrupt climate change and influences of extreme environment.

### Features

- 19" size
- General dimension: 220X80X40cm
- Imported cabinet body with high intensity and anti-erosion performance
- Can counter abrupt climate change
- Influences of extreme environment protection level is IP65
- Capacity can be flexibly customized as required
- Built-in direct melt unit capable of providing direct connection functionality
- With secure and reliable fastening and grounding protection devices for the optic fiber
- Applicable to strap-shaped and non-strap shaped fibers
- About 110KGS
- the front door is transparent , the backdoor could be opened
- made by painted cold rolled steel



### Optic Distribution Cabinet



#### Description

Fiber optic cross connect cabinet is an outdoor optical equipment that is especially designed for outdoor optical nodes in access net work

#### Features

- High intensity and anti-erosion performance Able to counter abrupt climate change and extreme environment
- Capacity can be flexibly customized as required
- Installation is quick and convenient
- Built-in direct splice unit is capable for providing direct connection function.
- Perfect design of fiber wiring routing could facilitate management and maintenance of fibers
- With secure and reliable fastening and grounding protection devices for the optic fiber
- Applicable to strap-shaped and non-strap shaped fibers

#### Technical Parameter

- Nominal work wave-length: 850nm, 1310nm, 1550nm
- Protection level: IP65
- Work Temperature: -45°C~+85°C
- Relative humidity: ≤85%(+30°C)
- Atmospheric pressure: 70~106 KPa
- Insertion loss: ≤0.2dB
- Return loss: ≥45dB (PC), 55dB(UPC), 60dB(APC)
- Isolation resistance(between frame and protection grounding): > 1000 MΩ/500V(DC)

#### Material:

- SMC or Cold-rolled steel

Model	Fiber Quantity	Dimension(cm)	Weight(Kg)
WT-ODF-OC288	288	143*75*30	50
WT--ODF-OC144	144	96*53*32.5	40

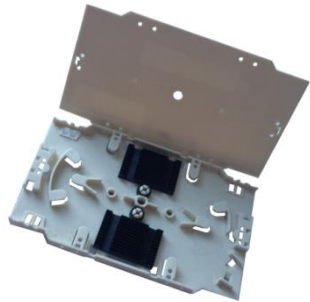


# Fiber Optic Patch Panel&ODF&Cabinet

## Splicer tray&Accessories

### Splicer tray& Accessories

Splice tray for 12 fiber  
 Splice tray for 24 fiber  
 Customized design available



### Fiber manager



### Protection sleeve



14 Years

Manufacturer&Supplier of Professional Fiber Optic Cabling System



**Thank you for your reading!**

深圳威尔特通信科技有限公司

2023 VERSION

Add: 2rd floor, 2 Building, Jingheyuan Industry Park, No.2004 Xuegang Road, Bantian Street,  
Longgang District, Shenzhen, China

Tel: 86-755-28461866 Fax: 86-755-28461781

Website: <http://www.wirenetfiber.cn>