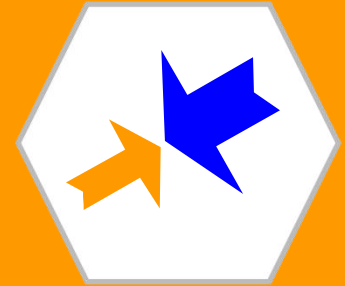


14 Years

Manufacturer & Supplier of Professional Fiber Optic Cabling System

Products & Services & After sales services



Wirenet Telecom Technology Co., Ltd

深圳威尔特通信科技有限公司

2023 VERSION

Add: 2nd floor, 2 Building, Jingheyuan Industry Park, No.2004 Xuegang Road, Bantian Street,
Longgang District, Shenzhen, China

Tel: 86-755-28461866 Fax: 86-755-28461781

Website: <http://www.wirenetfiber.cn>

WIRENET TELECOM TECHNOLOGY CO., LTD



Fiber Optic FTTH tools and accessories

WIRENET FTTH TOOLS SERIES

Catolog

WIRENET

FIBER OPTIC FTTH TOOLS AND ACCESSORIES

- FTTH Single Fiber Fusion Splicer
- OTDR
- OTDR Launch Box and VFL
- Fiber cleaver
- Fiber splicing protector
- Power meter
- Laser source
- Hand-held optic multi-meter
- Optical fiber identifier
- Video microscope
- hand-held fiber magnifier
- Fiber optic cleaning
- Communication tools
- Indoor cable tools
- Outdoor cable tools
- FTTH components



FTTX Tools And Equipment

Fusion splicer machine

Palmtop FTTH Fusion Splicer

Model	Handheld FTTH Fusion Splicer
Splicing Type	SM, MM, DS, NZDS
Splicing Loss	0.02dB(SM), 0.01dB(MM), 0.04dB(DS), 0.04dB(NZDS)
Return Loss	>60dB
Splicing Mode	Manual, Half Auto, Auto
Fiber Alignment	Core to Core Alignment by PAS technology
Applicable Fiber	Cable indoor and 0.25mm,0.9mm fiber, SC connector(option)
Splicing Time	≤9s
Heat Time	≤30s
Cleaved Length	8~16mm
Fiber Image/ Magnification	300/200
View Display	5 inch digital high-quality LCD screen
Tension Test	Standard 2N (option)
Heat Shrinkable Sleeve	60mm, 40mm and serials heat Shrinkable Sleeve
Battery Capacity	200 cycles splicing and heating, 3 hours charging time (splicing and charging at same time)
Battery Life	Cycling charge 300-500 times, easy to replace battery
Electrodes Life	3000, easy to replace electrodes
Power Source	≤20W
Interface	USB Convenient data download and software update
Construction Lighting	Built in high brightness, wide range of lights, easy to operate at night
Power supply	Built in lithium battery 5200mAh 11.1V; external adapter, input: AC100-240V, output: DC13.5V/4.5A
Operating Condition	0-5000m above sea level, Temperature: -10-60°C, Humidity:0~95%RH (No dew)
Weight (including battery)	2.1 KG (including battery)
Dimension (LxWxH)	135mm(L)×158mm(W)×155mm(H)

FTTH Single Fiber Fusion Splicer



This FTTH Fusion Splicer, with high performance price ratio, is the main product. With smart appearance, reliable quality, This FTTH Fusion Splicer is a special design for the installation, operation and maintenance of optical fiber specially design precision, durable, convenient optical fiber construction instrument. Widely used in the construction, inspection, maintenance of fiber cable.



FTTX Tools And Equipment

740 single fiber fusion splicer machine

740 Single Fiber Fusion Splicer

Features

- Compact & Light weight
- Fully Automatic Operation
- 5000m altitude ensures Splice Quality
- SYSTEM TEST ensures the best working condition
- Color LCD monitor
- Pause function, convenient for scientific research
- Store 8000 groups of splice results
- USB&DC interface
- High battery capacity, up to 120 times of continuous splice and heat



Applicable fibers	SM, MM, DS, NZ-DS(G655), EDF
Fiber cleaved length	8-22mm
Average splice loss	0.02dB(SM)、0.01dB(MM)、0.04dB(DS)、0.04dB(NZDS)
Return loss	≥60dB
Tension test	2.0N(200gf)(Standard)
Protection sleeve length	20mm, 40mm, 60mm
Splice Program	15 groups of preset programs, 1 group of manual setting
Language	English, Chinese, Korean, Russian, Spanish, Portuguese, German, French
Environment conditions	-25~+50°C (operation temperature), 0~95%RH (humidity), 0~5000m (altitude)
Storage environment	-40~+80°C (temperature), 0~95%RH (humidity)
Power supply	AC adaptor: 85~260V input voltage Internal battery: 12V, 6Ah, up to 120 times of continuous splice and heat
Dimensions/Weight	142 (D) × 122 (W) × 138 (H) mm/1.95kg



STANDARD PACKAGE

Fusion Splicer, Internal Battery, Charger, Spare Electrodes, Cooling Tray, Manual Instruction, Carry Case, Fiber Cleaver, Fiber Stripper, AC Adaptor, AC Power Cord



FTTX Tools and Equipment

Testing and Tools

OTDR

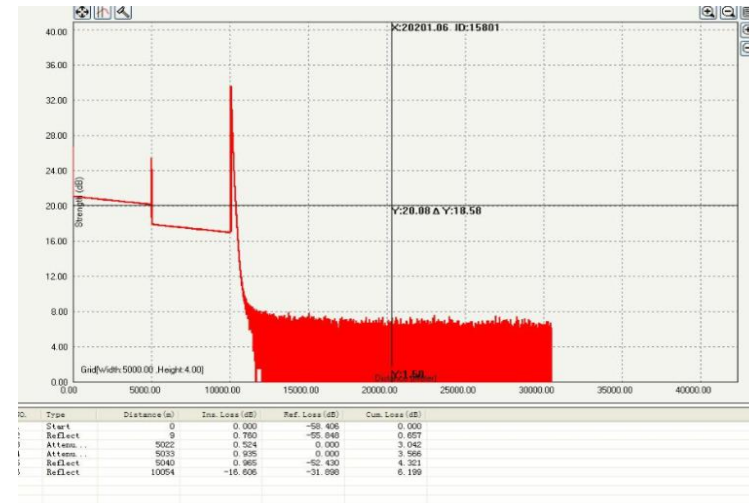
OTDR 600



Wavelength (nm)	850/1300	1310/1550	1310/1490/1550	1625
Dynamic range (dB)	20/18	32/30 36/34 38/36 42/40	32/30/30	34/36
Pulse width (ns)	5,20,40,80,160 ,320,640,1280	5,10,20,40,80,160	320,640,1280,2560,5120,10240,20480	
Event blind zone (m)		≤ 1.8		
Attenuation blind zone (m)		≤ 10		
Linearity (dB/dB)		± 0.05 dB		
Loss threshold (dB)		0.05		
Loss resolution ratio (dB)		0.01		
Sampling resolution ratio (m)		0.125 to 8		
Sampling point		32K		
Distance uncertainty (m)		$\pm(1\text{ m} + 5 \times 10^{-5} \times \text{distance} + \text{sampling interval})$		
Distance scope (km)		0.3 to 180		
Typical real-time refreshing duration (s)		0.2		
Memory capacity of trace		SD Card (2G), > 10000 pieces		
Duration of measurement		Defined by user; 5sec, 10sec, 15sec, 30sec, 1min, 2min, and 3min are selectable		

OTDR 350

Wavelength(nm):1310 \pm 20/1550 \pm 20
 Dynamic Range(dB):28/26& 32/30
 Event Dead Zone (m):<2m
 Attenuation Dead Zone (m):<8m
 Pulse width(ns):10ns, 20ns, 50ns, 100ns, 200ns, 500ns, 1.0us, 2.5us
 Distance accuracy(m): $\pm(1\text{ m} + 5 \times 10^{-5} \times \text{distance} + \text{sampling space})$
 Attenuation accuracy \pm 0.05dB/dB
 LCD type:3.5 inch TFT color LCD
 dimensions (mm): 210 \times 112 \times 67mm
 Weight: <1kg
 Visible Fault Locator:Wavelength: 650nm(3km)





FTTX Tools and Equipment

Testing and Tools

OTDR Launch Box and VFL

Designed to aid in the testing of fiber optic cable when using an OTDR. The OTDR Launch Fiber box is used with Optical Time Domain Reflectometers (OTDR's) to help minimize the effects of the OTDR's launch pulse on measurement uncertainty. Available in many different configurations and fiber lengths.

Feature

- Pulse Suppressor, Launch Box, Delay Line, Installation/Testing, Training, Calibration
- Compound Latch for positive seal and easy opening with locking feature.
- Non-metal construction will not dent, corrode, or conduce electricity
- Water and dust prove allowing the unit to be taken into almost any environment
- Case can house up to 2,000 meters of fiber
- Auto Purge Valve for changes in altitude and temperature



Big Box (0.5km, 2km]



Small Box (0km, 0.5km]

L x W x H: 23.8 x 14.1 x 6.7 cm / 13.5 x 9 x 4.3 cm

Material: SR Polypropylene

Color:Black/Yellow

Weight :0.75kg / 0.35 kg (without fiber)

Operating temperature :-40° to +55°C

Typical Loss :< 1dB @ 1310nm for 1000 meters

Pen Type Visualfult locator



Wavelength:650nm ± 20nm
 Operation Mode:Pulsed (2Hz)and CW
 Connector **:2.5mm or1.25mm Universalconnector



Output Power	>1mW	>10mW	>15mW	>20mW	>25mW	>30mW
Dynamic Distance*	>5km	>8-10km	>12-14km	>15-17km	>18-20km	>25-30km



FTTX Tools And Equipment

Fiber cleaver

Fiber cleaver

High Precision Fiber Optic Cleaver with Dustbin/Scrap Catcher

Feature

- High cutting quality.
- Durable design.
- Replaceable blade.
- Simple operation and Easy maintenance.

Using guide

- Read the description, before using Cleaver and keep description with Cleaver.
- Using Cleaver, please be cautious of the following particulars and prevent your body and property from harm and use carefully and usefully.
- Keep Cleaver away from water.
- Place Cleaver away from humid and dusty place.
- High temperature causes transforming, so keep it in normal temperature.
- Be careful with serious impact on it.
- Be sure that the stripped fiber length should be at least 12mm or longer.
- Clean the Cutting Edge Rubber Pad regularly with alcohol. Try not to use acetone or corrosive solvent when you clean the rubber pad.
- Keep the fiber holder clean to ensure no dust in it.



Product Specifications:

Fiber type	single fiber, ribbon fiber
Clad diameter	125um
Coating diameter	250~900um
Cleave angle capability	<0.5°
Cleave length	5~20mm
Blade lifetime	60,000 fiber cleaves
Dimension	59mm x 55mm x 49mm



FTTX Tools And Equipment

Fiber splicing protector

Wirenet Fiber Optic Splice Protector is consisted of a cross-linked polyolefin sleeve for protection, a steelrod (ceramic rod for ribbon fiber) for reinforcing this splice and hot fusion tube insert for rebuilding the coating of the fiber. This protector provides mechanical reinforcement at joint point and maintains the optic transmission properties of the fiber optic cable.

Temperature Range:

- ✓Operating Temperature: -55 ~ 100
- ✓Shrink Temperature : 120

Color:

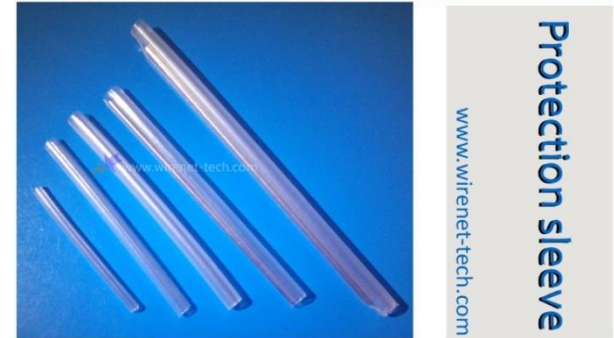
- ✓Transparent



•Specification:

•Item	•Test Method	•Typical Data
•Tensile strength	•ASTMD2671	•18Mpa
•Ultimate elongation	•ASTMD2671	•700%
•Density	•ISOR1183D	•0.94g/cm3
•Dielectric strength	•IEC243	•25KV/mm
•Dielectric constant	•IEC243	•2.5
•Longitudinal change	•ASTMD2671	•2.5

Fiber splicing protector



•Ordering Information

- Single Optical Fiber Fusion Splice Protector ;
- Ribbon Fiber Fusion Splice Protector;

When ordering this product, please specify:

- Steel Rod' s OD and length ;
- Splice Protector' s OD and Length .

•Packing

- 100pcs/bag





FTTX Tools and Equipment

Fiber optic testing

Power meter

Power meter

handheld optical power meter is a compact and an easy-to-use testing instrument for optical fiber networks, which can be used for absolute optical power measurements as well as for relative loss measurements in optical fibers. It features ingenious appearance, wide range of power measurement, high accuracy and user self-calibration function with high performance-to-price ratio.

Features

- *User self calibration function
- *Comfortable LCD display and optional backlight LCD display supports night operation
- *Power measurements in dBm or mw and insertion loss in dB
- *Low battery consumption, more than 240 hours continual operation timefor three 1.5V alkaline batteries
- *10 minutes Auto-off function can be activated or deactivated.

Applications

Maintenance in Telecom
 Maintenance CATV
 Fiber Optic Lab Testing
 Other Fiber Optic Measurements

Measurement Range (dBm)

- A: -70~+6dBm
- C: -50~+26dBm

Power Meter with VFL

built-in battery





FTTX Tools and Equipment

Fiber optic testing

Laser source

Laser source

optical light source can provide 1 to 4 output wavelengths to meet specific requirements, including the 650nm red source and the 1310/1550nm wavelengths for single mode fiber or the 850/1300nm wavelengths for multimode fiber, as well as other wavelengths according to customer needs. Together with the JW3208 optical power meter, it is a perfect solution for the fiber optic network characterization

Features

- * Provides 1~4 output wavelengths which can be optional according to customer's needs
- * CW, 2Hz modulation output at 650nm, and CW, 270Hz,1KHz,2KHz modulation output at other wavelengths.
- * High stability of the output power
- * Stable output wavelength
- * Backlight LCD display supports night operation
- * Compact size and decent appearance
- * Large LCD, easy operation
- * Alternative 10 minutes Auto-off function conserving battery life



Wavelengths(nm)	650	1310/1550	850/1300	850/1300/1310/1550
Emitter	TypeFP-LD,LED or others please specify			
Typical Output Power (dBm)	0	-7dBm for LD, -20dBm for LED		
Spectral Width(nm)	1. ≤ 10			
Output Stability	$\pm 0.05\text{dB}/15\text{mins}$; $\pm 0.1\text{dB}/8\text{hours}$			
Modulation Frequencies	CW,2Hz		CW,270Hz,1KHz,2KHz	
Optical Connector	FC/ universal adaptor		FC/PC	
Power Supply	Alkaline Battery(3 AA 1.5V batteries)			





FTTX Tools and Equipment

Fiber optic testing

handheld optic multi-meter

Handheld Optical Multi-meter Integrates the functions of an intelligent optical power meter module and of a highly stable light source module in one unit. It can also provide data storage and upload functions. It is widely used in installation ,measurement and maintenance of DDN, Telecom and CATV networks.

Features

- * Users could write their own software by the communication protocol provided
- * Automatic wavelength of light source switching
- * Frequency identification.
- * Simple function mode switching
- * High stability of the output power
- * Data storage function, up to 1000 test records
- * USB communication port for saved testing records download
- * Alkaline Battery and Mini USB Adapter for power supply



Optical Power Meter Module		
Detector Type	InGaAs	
Measurement Range(dBm)	-70~+6	-50~+26
Rosolution(dB)	0.01	
Uncertainty	$\leq \pm 0.25$	
linearity (dB)	$\leq \pm 0.1$	
Frequency ID Range (Hz)	<10K	
Optical Light Source Module		
Wavelengths(nm)	1310/1550(other wavelengths can be optional)	
Typical Ouput Power(dBm)	-5	
Output Stability (dB,30min,20°C)	≤ 0.1	
Modulation Frequencies(Hz)	CW,270,1K,2K	
General Specifications of Multi Meter		
Power Supply	3 pcs 1.5V Alkaline Batteries/Mini USB 5V Adapter	
Battery Operating Time(h)	≥ 50 (Both Power Meter and Light Source are working) ≥ 200 (Only Power Meter is working)	
Auto-off time (min)	10	
Communication Port	Mini USB	
Operating Temperature(°C)	-10~+60	
Storage Temperature(°C)	-25~+70	
Dimension(mm)	175X90X44.5	
Weight (g,without batteries)	265	



FTTX Tools and Equipment

Fiber optic testing

Optical fiber identifier



- Indicate the signal directions in fiber
- Indicate the signal presence or absence (Live or dark fiber)
- Detect tones 270Hz, 1kHz and 2kHz to verify the modulated signal type
- Suitable for 0.25, 0.9, 2.0, 3.0mm fiber, and no need to replace the clamp block, more convenient than others
- Built in VFL 1mW or 10mW (optional)
- Battery low indication
- Powered by 2 units of 1.5V AA batteries

Main Characteristic

Wavelength Range	800 to 1700nm (SM)	
Recognizable signal type*	CW, 2kHz, 1kHz, 270Hz ± 10%	
Detector Type	InGaAs 2pcs	
Fiber Type	0.9, 0.25, fiber	
Sensitivity *	1310 nm	+10dB to -20 dBm (Continuous Wave)
		+10dB to -15 dBm (Modulated Signal)
	1550 nm	+10dB to -30 dBm (Continuous Wave)
		+10dB to -25 dBm (Modulated Signal)
LED Indicator*	Signal direction; signal frequency (2kHz/1kHz/270Hz); low battery	
Signal intensity	0 ~ 40	
Storage Temperature	-20 -- + , < 90%RH	
Operating Temperature	-10 -- + , < 90%RH	
Power Supply	AA * 2	
Size	* *	
Weight	About	

* at 20 ± 3°C, 0.9mm fiber, with white coat





FTTX Tools and Equipment

Fiber optic testing

Video microscope

Hand-held Inspection Probe



- FC/SC/ST/E2000 patch cord UPC connector
- LC/MU patch cord UPC termination
- FC/SC/ST/E2000 UPC bulkhead
- LC UPC bulkhead
- FC/SC/ST/E2000 patch cord APC connector
- LC/MU patch cord APC termination
- SC APC bulkhead
- FC APC bulkhead
- LC APC bulkhead

Standard adapter matching



This product is a portable, video microscope used to inspect all kinds of fiber optic terminations, especially for the female ones. It eliminates the need to access the backside of patch panels or disassemble hardware devices prior to inspection.

Features

- Convenient using both for male and female adapters;
- Widely used in DWDM, SDH, SONET etc.
- Magnification: 250* via 3.5" 220,000 pixels TFT LCD;
- Available for USB 2.0 interface on PC and data saving



Specifications

Magnification	400x (9" Monitor) 250x (3.5" Monitor)
Resolution Ratio	0.5 um
Display Screen	3.5" TFT-LCD, 960x240 pixels
Video Output	NTSC / PAL
Power Supply	3.7V 4500mA / 5V 1A Li Battery
Weight	1.5kg
Work/Storage	-20°C~+50°C -30°C~+60°C

Suggestion

Hand-held Inspection Probe
Save more cost in a cleaning tool bo



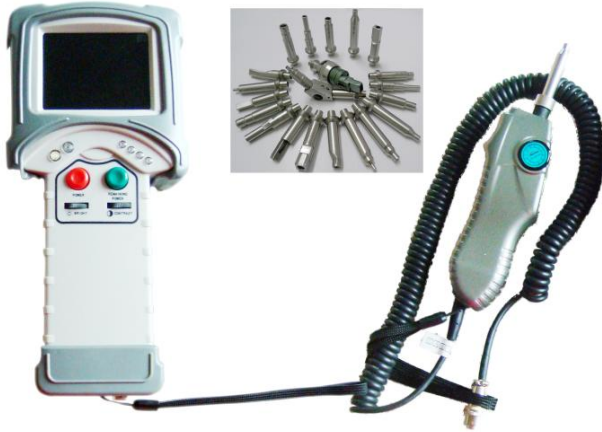


FTTX Tools and Equipment

Fiber optic testing

Video microscope

Hand-held Inspection Probe



Application

This product features unparalleled advantages of probe adjustment and alignment, displaying high definition and clear image for inspection. It includes a Probe and 3.5inch display for the whole set.

Soft ware available

The probe is of a high performance inspection probe. Compared with the traditional tools, its unique single-way of focus control greatly simplifies the work. No matter left or right hand, forward or reverse operation, it can quickly get the end face inspected and have image displayed easily in one-way. It tailors the fiber operator and manufacturer for special quick, comfort end face testing, committing to serve you the best.

Key Features

- Single way to have focus control, stir the wheel with fingers simply to have loop control with back or forward movement.
- 400× Magnification Ability, less more 1um Resolution.
- Bright and Contrast Adjustment for indoors/outdoors operation.
- 27 assorted of tips available to have both PC and APC end face inspection.
- 60° angle tips to test multiple types of connectors.
- Ability to inspect MPO/MTP etc PC and APC multiple cores end face.
- Precise cone contact in the front of probe to reach 98% alignment consistency
- USB feature to connect PC and data software analyze.
- Stable for more than 8 hrs continuous work with less than 3% failure.



* * Standard tips: SC-P-F,FC-PC-F,LC-P-F,2.5mm-M



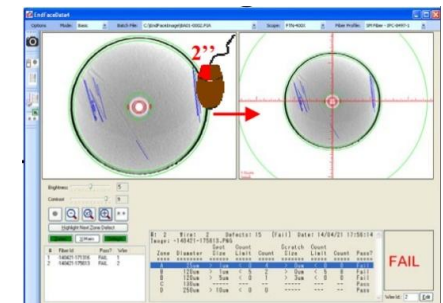
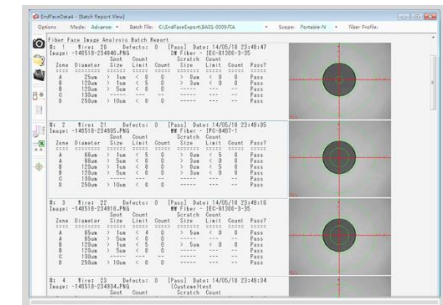
FTTX Tools and Equipment

fiber optic testing

Video microscope

Hand-held Inspection Probe Specification

Component	Arguments	Index
Probe	Magnification Ability	400X
	Resolution(μm)	1 μm
	View of Field(mm)	0.40*0.31
	CCD Sensor	1/3, 600Line
	LxWxH Size(mm)	165*28*40
	Weight(Kg)	0.8
	Storage Temperature	-18°C-35°C
3.5 Inch Display	End face size in display(mm)	21.25
	Pixel	230000
	Battery Volume(mAh)	3500
	Working Hours	9h
	Weight(Kg)	1
Digital USB Feature	To connect PC and have real-time inspection through USB feature with 700A probe, no need for any additional power cord.	
EFD3.3.0 Version Data Analyze Software	<ul style="list-style-type: none"> ◆ Verification of Fiber end face quality, pass or fail judgment based on standard international criterion IEC/IPC or customize. ◆ Pdf,Excel Report file generated to have scratch, spot etc defects measured and counted around the fiber end face. ◆ Analyze Support in image, video and real-time inspection. 	





Hand-held fiber magnifier

Hand-held Fiber Magnifier



Specific Details

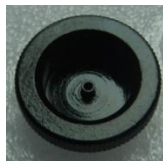
400x Magnification for either
Multimode or Singlemode fiber.

Product Description

- Easy to use,
- high quality,
- hand held fiber inspection scope.



2.5mm adaptor



1.25mm adaptor

Features and Benefits:

- Universal 2.5mm and 1.25mm Adapter - Each unit comes standard with a Universal adapter that fits 2.5mm and 1.25mm ferrules.
- Magnification - 400x optics for either multimode or singlemode fiber.
- Power Source - Powered by three (3) easy to obtain AAA Alkaline batteries.
- Safety Filter - Built in laser safety IR filter provides eye protection.
- LED Illumination - Internal white LED illumination is rated for 100,000 hours of use.
- Accessible Controls - Momentary ON/OFF switch for the light source, and a fine focus control wheel making adjustments easy and convenient.
- Cupped Rubber Eyepiece - Provides a comfortable eyepiece even while wearing glasses.

Manufacturer Description

wirenet's WTHFS-400 Hand Held Microscope allows the user to visually inspect connectors for cleanliness and polish during connector assembly.

This microscope offers high resolution, and utilizes a white light LED for coaxial illumination. Light is introduced

into the optical path (axis) so that it comes out the tip of the objective lens and strikes the ferrule perpendicular to the endface. This method of illumination produces a high level of resolution providing excellent detail of scratches and contamination making both units ideal for a variety of applications including field, central office and manufacturing.



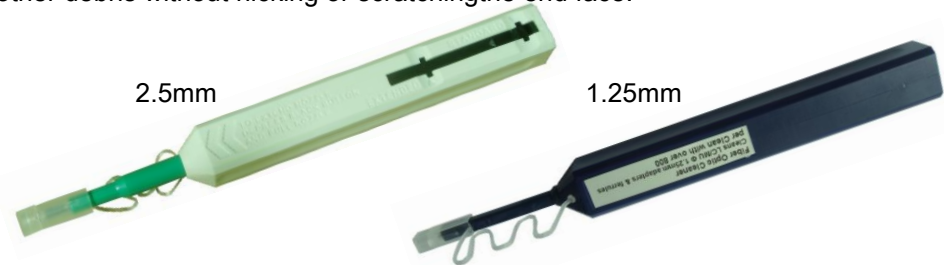


FTTX Tools and Equipment

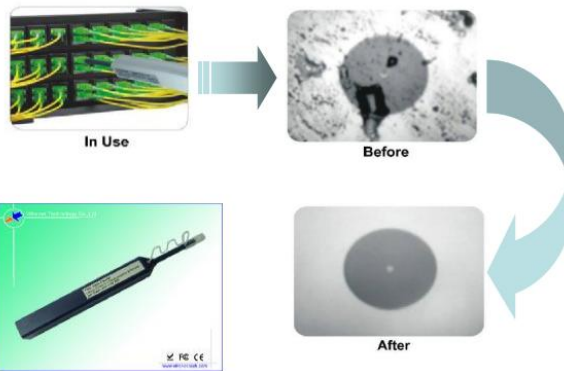
Fiber optic cleaning

Fiber optic cleaner pen

FiberOptic CleanerPen is designed to specially work well with the female connectors, this instrument cleans the ferrule end faces removing dust, oil, and other debris without nicking or scratching the end face.



Mini type



FC/SC/ST Application		MU/LC Application	
1. Remove Guide Cap from the device. 	1. Open the Cover on the Guide Cap. 	1. Remove Guide Cap from the device. 	1. Open the Cover on the Guide Cap.
2. Insert tip of cleaner into SC Adapter. 	2. Insert connector into the Guide Cap. 	2. Insert tip of cleaner into MU/LC Adapter. 	2. Insert connector into the Guide Cap.
3. Push the Outer Shell to start cleaning the SC connector. A "click" indicates end of cleaning process. 	3. Push the Outer Shell to start cleaning. A "click" indicates end of cleaning process. 	3. Push the Outer Shell to start cleaning the MU/LC Adapter. A "click" indicates end of cleaning process. 	3. Push the Outer Shell to start cleaning. A "click" indicates end of cleaning process.

- Ordering**
- FC/SC/ST CleanerPen, universal 2.5mm;
 - LC/MU CleanerPen, universal 1.25mm
 - Mini 2.5mm
 - Mini 1.25.



FTTX Tools and Equipment

Fiber optic Cleaning

Fiber optic cleaner pen

MPO/MTP Cleaner

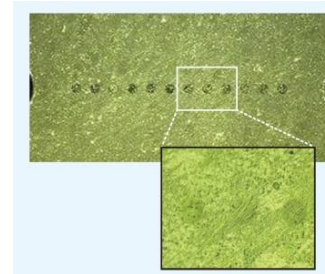


Most of the fault of the fiber optic equipment is caused by the dust on the fiber interface.

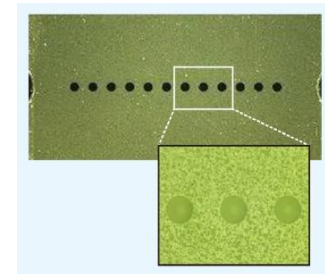
NEOCLEAN-M cleaner, using the minuteness fiber, can help clean the the smallest dirt on MPO/MTP connector



before cleaning



after cleaning



*** just one Click! no need of some special skill**
embedded with minuteness fiber,
wont cause scratch on the fiber core,
simple one click can finish the cleaning

*** Compact design, easy to operate**
compact design, easy to operate and easy to carry,
cleaning time more than 600times

*** one cleaner can cleaner MPO connector and connector inside the adapter**
one cleaner can cleaner MPO/MTP connector& connector inside the adapter by loading unloading the kit





FTTX Tools and Equipment

Fiber optic Cleaning

Fiber optic cleaning tool box

Check and clean the connector End-face .



Strip and cut fiber optic cable



Install the FTTH fast connector



Fiber Optic Cleaner





FTTX Tools and Equipment

Fiber optic Cleaning

Fiber optic cleaning tool box

One of the most important but often over-looked aspects of fiber optic installations is cleaning. A dirty cable or coupler could render your equipment useless. If you would like to get the best performance out of your cables, we suggest giving one of our Fiber Optic Cleaning Kits a try.



700



770



750

Could also
customized



730



300P



400B



FTTX Tools and Equipment

Communication Tools

Optical talk set



- * Talk by connecting with fiber
- * Full-duplex communication with high quality conversation and very low background noise
- * Light source capabilities
- * Wide dynamic range: 45dB;
Large dynamic distance: >120km
- * Long/short mode for different distance
- * Power autonomy of 70 hours

SPECIFICATIONS	
Model	AOT600
Wavelength	A: 1310nm, B: 1550nm
Operating Style	Full duplex communication.
Output Power	> -5dBm
Fiber Type	SM
Dynamic Range*	SM fiber: 45dB
Dynamic Distance*	SM fiber: > 120 km
Connecting Adapter	FC / PC
Battery Charge	Optional
Operate Time	Above 12 hours
Power Supply	2 * AA batteries or AC/DC adapter

* not use the fiber clamp for connecting

Size(H*W*D)	170mm * 97mm * 38mm
Weight About	380g
Storage Temperature	-20 -- +60 , < 90%RH
Operating Temperature	-10 -- +50 , < 90%RH



FTTX Tools and Equipment

Indoor cable Tools

Indoor cable tools

Precision Fiber Strippers

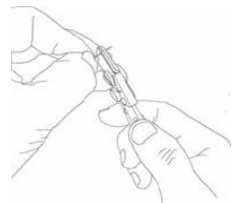


Clauss CFS-2

Miller CFS-2



Multi-function stripper



single-Hole

Dual-Hole

Tri-Hole



Fiber Jacket Strippers



FTTH flat drop cable stripper



Flat Drop Optical Cable

Buffer Tube Stripper



45-162

45-163



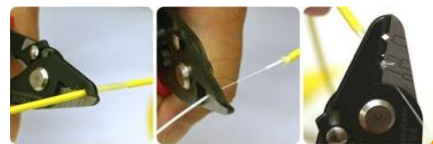
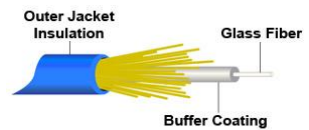
HW-45

- a. (Ø1.5-Ø1.9mm)
- b. (Ø2.0-Ø2.4mm)
- c. (Ø2.5-Ø2.9mm)
- d. (Ø3.0-Ø3.3mm)

Fiber Optic Kevlar® Cutter



Tri-Hole Fiber Strippers & Adjustable Strippers





Outdoor cable Tools

Longitudinal & Round Cable Slitters



- Used for removing the outer sheath(PVC & Plenum types) of fiber optic cable
- Adjustable cutting depth for insulation from .12" (3mm) to 1.38" (35 mm) thick
- Includes spare blade in handle



- RCS-114 for smaller diameter cables: 0.178 to 1.14 inches (4.5 - 29 mm)
- RCS-158 for larger diameter cables: 0.75 to 1.58 inches (19 - 40 mm)
- Blade depth can be regulated by simply turning the blade housing
- Spiral cut for end stripping or mid-span stripping



- Perfect tool for cutting jackets from a variety of fiber optic cable
 - V-opening in blade
 - Adjustable blades with a screwdriver for various size cables
 - Economical tool for multiple cables
- Works with standard 30-10 AWG (0.05-6mm²) wire in addition to fiber optic cable



Cable Cutters



- Tool for safe longitudinal slitting of plastic cable sheaths with different thickness
- Applicable either at the beginning or in the middle of the cable. Additional attachable pieces for slitting optic cables and cables with small diameter available
- Attachable piece, grey for cables up to 25 mm

Armored Cable Slitters





FTTX Tools and Equipment

FTTH components

FTTH components

fiber optic fast connector



fiber optic mechanical splicer



ITEM	Technical Parameters
Applicable for	3.1x2.0mm drop cable or 3.0/2.0/0.9mm cable
Optical fiber diameter	125μm
Tight buffer diameter	250μm
Fiber mode	Single & multi mode
Operation time	About 10s (exclude fiber cut)
Insert loss	≤0.3dB (1310nm & 1550nm)
Return loss	≤ -45dB
Fastening strength of naked fiber	>5 N
Tensile strength	>50 N
Using temperature	-45° C~+80° C



FAST-C60+



FAST-C55+



FAST-C523+



FAST-C497+



FAST-C50K+



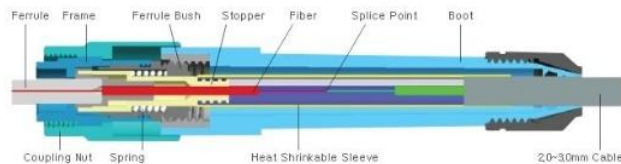
FAST-CQ+



FAST-F55+



FAST-L45+





FTTX Tools and Equipment

FTTH components

FTTH components

With easy accessibility to the fiber and simple installation, FTTH cable can be directly connected to the homes. The following figure shows the Simplex FTTH Indoor fiber patch cable used together with fiber optic wall plate outlet in part of FTTH solutions.



14 Years

Manufacturer&Supplier of Professional Fiber Optic Cabling System



Thank you for your reading!

深圳威尔特通信科技有限公司

2023 VERSION

Add: 2rd floor, 2 Building, Jingheyuan Industry Park, No.2004 Xuegang Road, Bantian Street,
Longgang District, Shenzhen, China

Tel: 86-755-28461866 Fax: 86-755-28461781

Website: <http://www.wirenetfiber.cn>